



Project Name: \_\_\_\_\_

Item #: \_\_\_\_\_

Quantity: \_\_\_\_\_

**Type: Blast Chiller/Shock Freezer**  
**Model: AP3BCF30-1**



**Blast Chiller/Shock Freezer - AP3BCF30-1**

**Standard Features**

**PERFORMANCE:**

- Blast chilling (soft or hard) lowers the food core temperature from 160°F to 38°F within 90 minutes
- Shock freezing lowers the food core temperature from 160°F to 0°F within 4 hours
- *Chilling times will vary somewhat, depending on the food quantity, initial temperature, density, moisture content, specific heat, and type of container*
- The airflow has a high velocity, indirect pattern designed to cool all levels at identical rates
- Time/temperature chilling rates meet or exceed all FDA, NSF, and state regulations

**EASY TO USE CONTROLS:**

- Microprocessor control system
- Solid state electronic control panel - easy to use and read
- Available cycles - Soft Chill, Hard Chill, Shock Freeze, Holding
- One core temperature probe is provided
- Automatic operation - Probe monitors the temperature of the product and ends the cycle when the product is at a safe temperature

**CABINET CONSTRUCTION:**

- Constructed of polished type 304 stainless steel
- 2" of CFC-free, high density polyurethane insulation
- Interior has a mirror finish and fully rounded interior bottom
- Removable magnetic door gasket.
- Door is hinged on the operator's left
- 6' long four wire cord set with NEMA 5-15P plug provided
- 6" height adjustable legs
- Clearance: 24 1/8" at the front for door opening, 5" at the back, and 3" either side

**REFRIGERATION SYSTEM:**

- Self-contained refrigeration system
- E-coated (electro-deposition coated) multiple circuits evaporator designed specifically for blast chilling operation
- Wash-down type motorized impeller fans with sealed ball bearing and overload protection
- Condensing unit uses R-404A refrigerant
- Evaporator temperature range is +25°F to -40°F
- Compressor is hermetic type with internal overload protection



**Overview:** American Panel's blast chillers and shock freezers are the perfect product for all of your chilling and freezing needs. These units are completely self contained and ready for plug and play operation. The HURRICHILL series of chillers also features a consolidated evaporator fan assembly. This places all of the components within the cabinet, which greatly reduces the overall footprint of the unit. American Panel quality and precision in a flexible format to fit your needs.

**Warranty**

The warranty covers all parts found to be defective and the labor required to replace them for a period of one year from the date of shipment. The compressor only is covered for an additional period of four years, as a part only, no labor.  
Warranty excludes food probes.

**Capacity**

3 pan slides - each pan slide can hold (1) 12" x 20" x 2.5" pan

**Product Yield**

- 30 lbs. - 160°F - 38°F in 90 minutes
- 36 lbs. - 160°F - 38°F in 120 minutes
- 18 lbs. - 160°F - 0°F in 240 minutes

**Certifications**



## Controller



**Soft Chilling:** The air temperature is held in the range of 28°F to 35°F, ideal for delicate food items. The chilling cycle is completed when the food core temperature reaches 38°F.

**Hard Chilling:** The air temperature is lowered to and held within a range of 0°F to 10°F. When the food core temperature reaches 60°F, the air temperature rises to a range of 28°F to 35°F. The chilling cycle is completed when the food core temperature reaches 38°F.

**Shock Freeze:** The air temperature is lowered to and held within a range of -20°F and -15°F. The freezing cycle is completed when the food core temperature reaches 0°F.

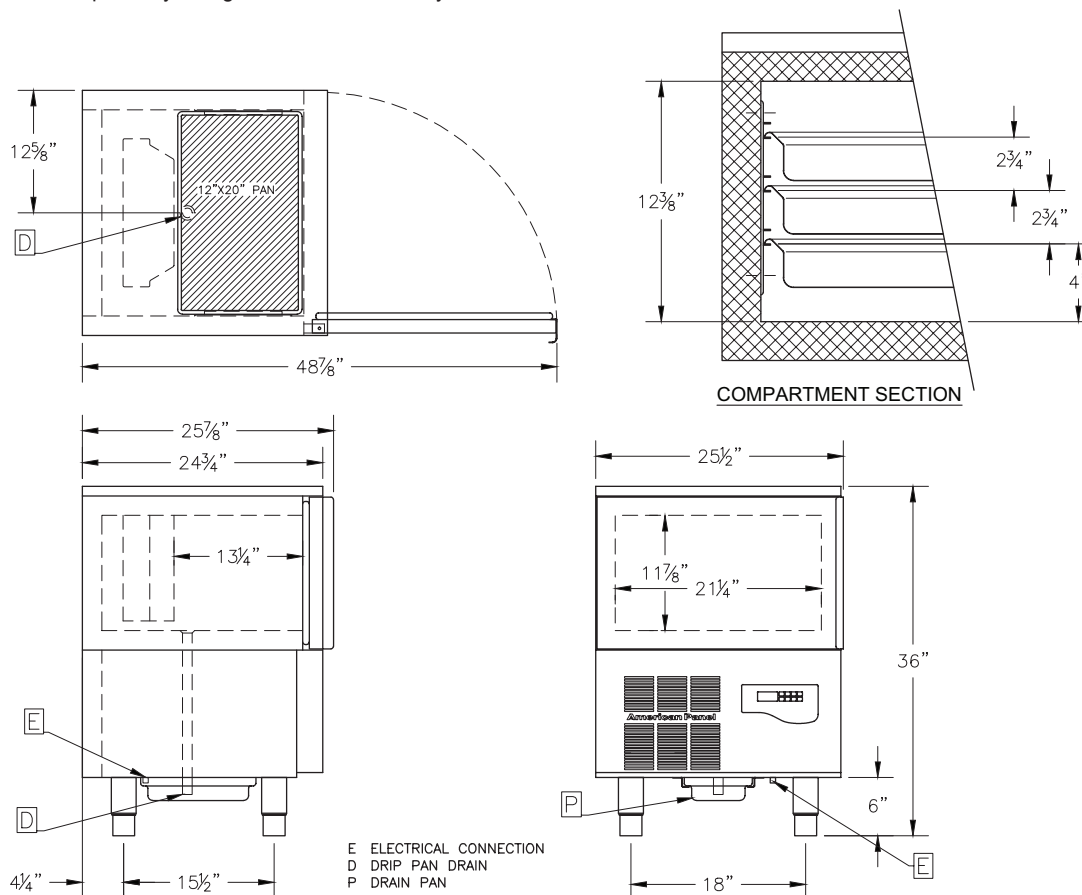
**Holding:** At the end of any cycle (soft/hard chilling, shock freezing or thawing), the unit will automatically switch to a holding mode which will keep food at 38°F (chilled/thawed) or 0°F (frozen) until STOP button is pressed to end the cycle.

### ADDITIONAL FEATURES:

**Defrost:** Air defrost feature

## Dimensions

**INSTALLATION:** A detailed installation manual is provided. It must be carefully followed to ensure proper operation and to protect your rights under the warranty.



## Specifications

Model	Electrical						Compressor HP	Ship Weight
	V	Hz	PH	A	MCA	MOPD		
AP3BCF30-1	120	60	1	10.0	15	15	3/4	301lbs.

## Options and Accessories

- **Mobile Units:** 6" high adjustable stainless steel legs are standard. Heavy duty casters, two with brakes, are optional.
- **Wire Shelves:** To accommodate fractional size food pans.
- **Touchscreen controller**
- **APS-5 Equipment stand** with 5 tray guides